



Press the TV Power button on your TiVo's remote to turn on your TV; the TV displays whatever channel it's currently tuned in to.



Or, if your TV's already turned on, press the Live TV button from any TiVo menu to jump quickly to the currently playing channel.



The first truly pleasant surprise comes with the Rewind button: When first turning on the TV and seeing live TV, feel free to hit TiVo's Rewind button a bit to catch up. Because TiVo's always recording *something*, it constantly records up to the last half hour of the currently tuned live show, just in case you might want to watch it. Quite a thoughtful robot, that TiVo.

As you watch live TV, TiVo won't forget your scheduled recordings. In fact, when it needs to record one, it lets you know a few minutes beforehand: TiVo explains what show it needs to record and asks permission to change the channel, as shown in Figure 5-1.

If you don't press any button at all, TiVo assumes you've nodded off and it's expected to record your show as scheduled. So, when the recording time begins, TiVo changes the channel automatically and records your scheduled show.

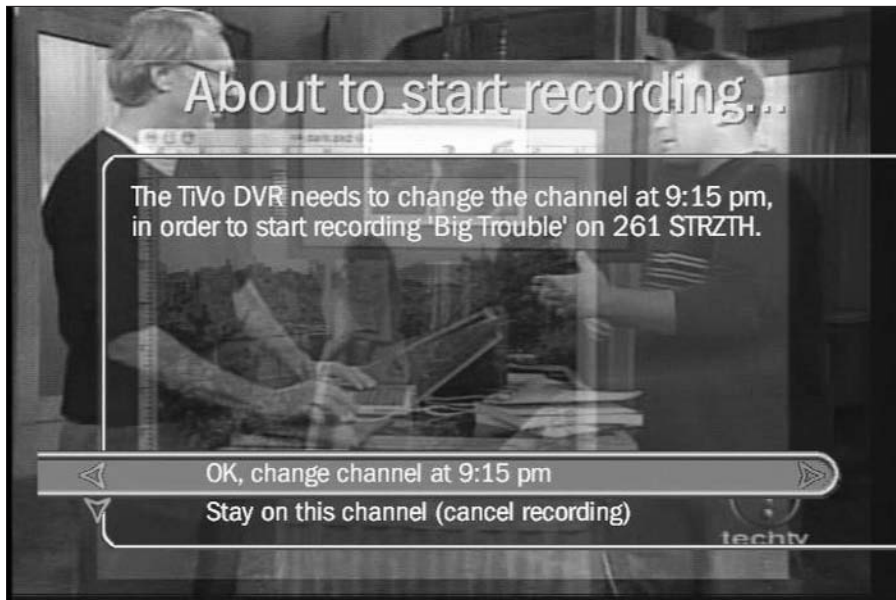


Figure 5-1: When TiVo needs to change the channel to record a show, it lets you know.